

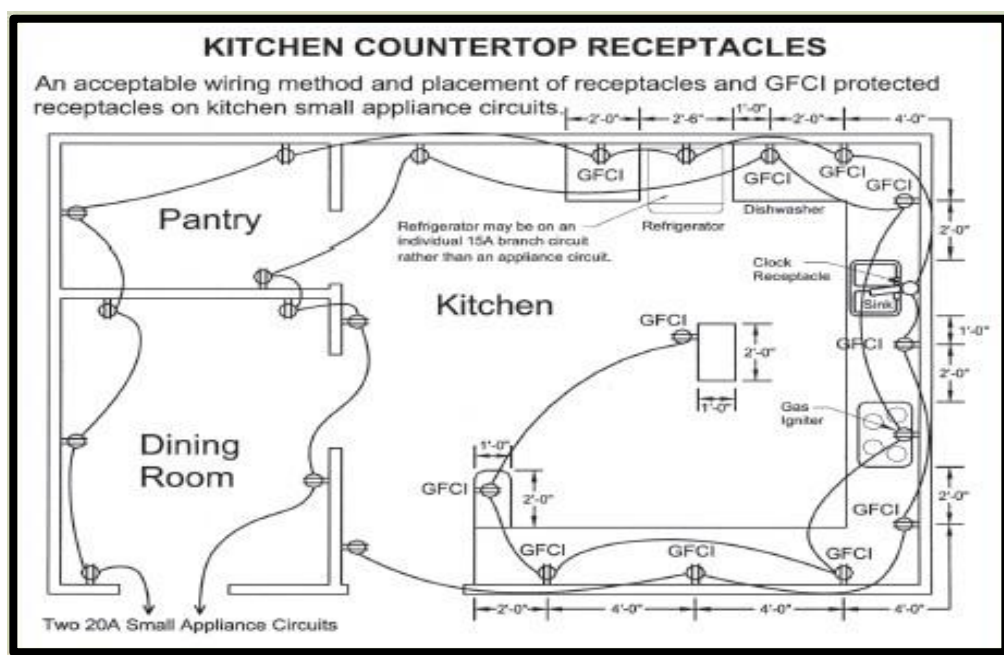
Residential Kitchen Remodel Requirements

SMOKE AND CARBON MONOXIDE ALARMS

All work exceeding \$1,000 requires the installation of listed/approved *smoke alarms* in all bedrooms, adjoining hall, and at each level per the building code. A carbon monoxide alarm is required, when there is an attached garage or fuel burning appliance, in the adjoining hallway(s) of the bedrooms and on every level of a dwelling unit including basement.

GENERAL ELECTRICAL REQUIREMENTS

- Countertop receptacles are intended for small appliances, and may not be used for exhaust hoods or fans, disposals or dishwashers.
- Countertop receptacles must be GFCI protected
- If countertop is longer than 12 inches, it must have its own receptacle
- Countertops 48 inches long may be serviced by one receptacle-provided no point along the wall is more than 24 inches from a receptacle. *Peninsular-type countertop*, measure it from the edge of the section connecting countertop, not the wall. An *island-type countertop* at least 12" in size is also required to have its own receptacle.
- Countertop receptacles in the kitchen shall be evenly divided on two or more 20-amp appliance circuits, which may supply receptacle outlets in the dining, breakfast or pantry rooms.
- 50% of the total wattage in the kitchen must be high efficiency. Low efficiency fixtures may be installed but are not to exceed 50% of total wattage in kitchen area and must be separately switched



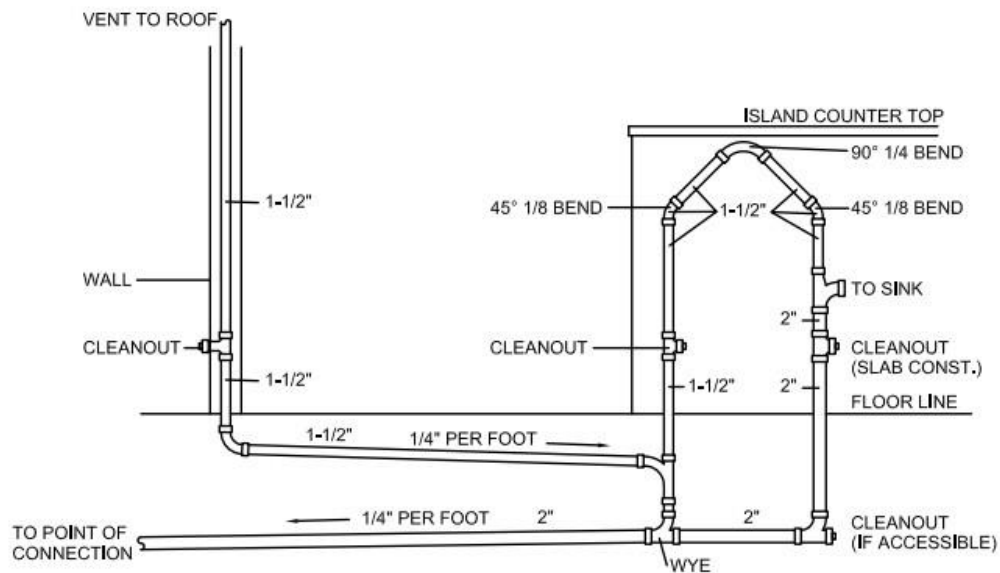
GENERAL MECHANICAL REQUIREMENTS

- Minimum vertical clearance of 30 inches is required above cook top to combustible materials (e.g. cabinets). Clearance may be reduced to 24 inches when protected exhaust hood.
- Exhaust duct must terminate 3 feet from any openings or property line.
- Exhaust duct must be metal and have smooth interior surfaces (no flexible duct allowed).

GENERAL PLUMBING REQUIREMENTS

- Every gas appliance is required to have an accessible shutoff valve in the same room within 3 feet of the appliance.
- If adding or moving a gas line it will require a pressure test with an approved gauge. Test pressure shall be no less than 1-1/2 times the proposed working pressure, but no less than 10 psi for 15 minutes minimum.
- The connection between a dishwasher and a food waste disposer or drain must have an air gap fitting installed above the flood rim of the sink.

Example Kitchen Island Vent



Example Floor Plan

UTILITY SYMBOL LEGEND

POWER:

- ⊖ STD. DUPLEX RECEPTACLE
- ⊕ QUAD RECEPTACLE
- ⊖ GFI GROUND FAULT (G.F.I.) DUPLEX RECEPTACLE
- ⊖ WP GFI WATERPROOF/ G.F.I. DUPLEX RECEPTACLE
- ⊖ 220v APPLIANCE RECEPTACLE NO. INDICATES VOLTAGE
- ⊖ +42" REF. DEDICATED RECEPTACLE

LIGHTING:

- ⊖ ELECTRICAL SWITCH
- ⊖ P.B. PUSH BUTTON SWITCH
- ⊖ WALL MOUNTED LIGHT FIXTURE
- ⊖ CEILING MOUNTED LIGHT FIXTURE
- ⊖ RECESSED/ FLUSH LIGHT FIXTURE 6" U.N.O.
- FLUORESCENT LIGHT FIXTURE; UTILITY OR UNDER/ OVER CAB.

MISC. UTILITY:

- F.G. FUEL GAS OUTLET
- H.B. WATER HOSE BIB
- ⊖ H/C WATER SUPPLY RECESS BOX

FLOOR PLAN LEGEND

WALL TYPE LEGEND:

- EXISTING WALL TO BE REMOVED
- EXISTING WALL TO REMAIN
- ▨ NEW 2x4 WALL
- ▨ NEW 2x6 STUD WALL (PLUMBING)

DOOR/ WINDOW CALLOUTS:

- SIZE: 3640
- INDICATES HEIGHT (4'-0")
 - INDICATES WIDTH (3'-6")

TYPE:

- | | |
|--------------------------|----------------------|
| SL - SLIDING | CS - CASEMENT |
| DH - DOUBLE HUNG | AWN - AWNING |
| SH - SINGLE HUNG | FX - FIXED PANE |
| FR, DR. - FRENCH DOOR | G.B. - GLASS BLOCK |
| TEMP. GL. - TEMPERED GL. | GL. - GLASS/ GLAZING |
| OBSC. GL. - OBSCURED GL. | S.C. - SOLID CORE |

